

Council Tax 2021/22

Well-being Impact Assessment Report


This report summarises the likely impact of the proposal on the social, economic, environmental and cultural well-being of Denbighshire, Wales and the world.

Assessment Number:	879
Brief description:	It is a proposed rise in Council Tax of 3.8% in order to support the 2021/22 budget.
Date Completed:	01/01/2021 15:18:41 Version: 1
Completed by:	Steve Gadd
Responsible Service:	Finance
Localities affected by the proposal:	Whole County,
Who will be affected by the proposal?	Council Tax payers in Denbighshire
Was this impact assessment completed as a group?	Yes

IMPACT ASSESSMENT SUMMARY AND CONCLUSION

Before we look in detail at the contribution and impact of the proposal, it is important to consider how the proposal is applying the sustainable development principle. This means that we must act "in a manner which seeks to ensure that the needs of the present are met without compromising the ability of future generations to meet their own needs."

Score for the sustainability of the approach

 (3 out of 4 stars) Actual score : 24 / 30.

Implications of the score

Whilst the Council Tax rise will increase the amount paid, it also allows the council to increase funding to provision in key areas such as social care and schools and maintain service levels broadly (there are some reductions but are not significant in terms of the size entire package) throughout other areas during 2021/22

Summary of impact

Well-being Goals

A prosperous Denbighshire

A resilient Denbighshire

A healthier Denbighshire

A more equal Denbighshire

A Denbighshire of cohesive communities

A Denbighshire of vibrant culture and thriving Welsh language

A globally responsible Denbighshire

Neutral

Positive

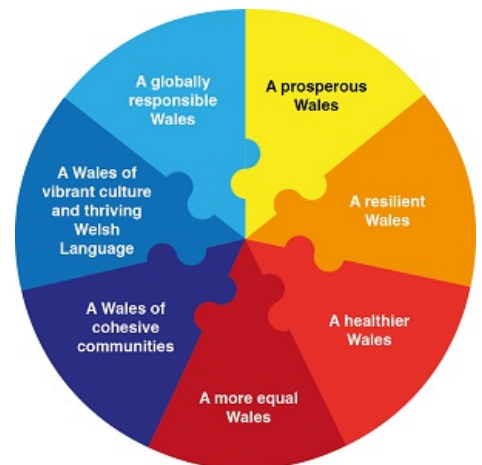
Neutral

Neutral

Positive

Neutral

Neutral



Main conclusions

The impacts are broadly neutral. This is because the Council Tax rise proposed supports a budget that protects existing service levels and increases investment in social care, schools and in other priorities. Clearly the impact is the increased tax paid by residents. The main mitigation is that around 25% of tax payers receive financial support through the Council Tax Reduction Scheme. However, it is recognised that for some taxpayers, the proposed rise will create an additional financial burden, particularly for those with relatively fixed incomes or little disposable income.

Evidence to support the Well-being Impact Assessment

- We have consulted published research or guides that inform us about the likely impact of the proposal
- We have involved an expert / consulted a group who represent those who may be affected by the proposal
- We have engaged with people who will be affected by the proposal

THE LIKELY IMPACT ON DENBIGHSHIRE, WALES AND THE WORLD

A prosperous Denbighshire

Overall Impact	Neutral
Justification for impact	Whilst the Council Tax rise will increase the amount paid, it also allows the Council to increase funding to provision in key areas such as social care, waste services, children's services and schools and maintain service levels broadly. It also allows funding of a number of corporate priorities including Carbon Neutral targets, Flood Defence and coping with Ash die-back.
Further actions required	There will be an impact on the personal budgets of those who will not qualify for support: residents will pay more Council Tax - however there is support via the Council Tax reduction scheme for those who qualify for such support.

Positive impacts identified:

A low carbon society	Funding for Carbon Zero projects are included in the overall proposals.
Quality communications, infrastructure and transport	
Economic development	Contingency in place to help finance local Covid Recovery strategy.
Quality skills for the long term	Investment in Schools have been included within the proposals.
Quality jobs for the long term	
Childcare	

Negative impacts identified:

A low carbon society	
Quality communications, infrastructure and transport	
Economic development	
Quality skills for the long term	
Quality jobs for the long term	
Childcare	

A resilient Denbighshire

Overall Impact	Positive
Justification for impact	The Council Tax rise proposed supports a budget that includes continued support in key priority areas highlighted such as biodiversity and flood risk management. The budget allows for a number of service pressures which will stand the Council in good stead to face the funding challenges of future years.
Further actions required	Residents will pay more Council Tax - however there is support via the Council Tax Reduction Scheme for those who qualify for such support. For those who do not qualify for Council Tax Reduction Scheme support, the Council works closely and proactively with Citizens Advice to provide help and support with personal budgeting to those residents who may require it. Flexible payment options are available over ten or twelve months.

Positive impacts identified:

Biodiversity and the natural environment	Corporate Priorities in this area are being recognised in the budget proposals.
Biodiversity in the built environment	Corporate Priorities in this area are being recognised in the budget proposals.
Reducing waste, reusing and recycling	Further investment in Waste services are included in the proposals.
Reduced energy/fuel consumption	Carbon zero project includes investment in fleet and building to reduce energy consumption
People's awareness of the environment and biodiversity	Corporate Priorities in this area are being recognised in the budget proposals.
Flood risk management	Specific funding is included in the proposals to match fund capital investment in flood defences.

Negative impacts identified:

Biodiversity and the natural environment	
Biodiversity in the built environment	
Reducing waste, reusing and recycling	
Reduced energy/fuel consumption	
People's awareness of the environment and biodiversity	
Flood risk management	

A healthier Denbighshire

Overall Impact	Neutral
-----------------------	---------

Justification for impact	The proposal to raise Council Tax supports a budget that allows service eligibility criteria to be maintained as much as possible. Not implementing the proposed rise would inevitably lead to reductions in service provision.
Further actions required	Residents will pay more Council Tax - however there is support via the Council Tax reduction scheme for those who qualify for such support. Help to those who do not qualify for Council Tax Reduction Scheme support, flexible payment options are available. Also, the Council works closely and proactively with Citizens Advice to provide help and support with personal budgeting to those residents who may require it.

Positive impacts identified:

A social and physical environment that encourage and support health and well-being	
Access to good quality, healthy food	
People's emotional and mental well-being	The Council Tax proposal supports a budget that maintains activity and service eligibility criteria in 2021/22 and provides increased funding for social care.
Access to healthcare	
Participation in leisure opportunities	

Negative impacts identified:

A social and physical environment that encourage and support health and well-being	
Access to good quality, healthy food	
People's emotional and mental well-being	In some circumstances, where residents have relatively fixed incomes or little disposable income and do not qualify for support, the additional cost may cause a degree of anxiety or stress.
Access to healthcare	
Participation in leisure opportunities	

A more equal Denbighshire

Overall Impact	Neutral
Justification for impact	The proposal to raise Council Tax supports a budget that avoids significant cuts to services received by the public in 2021/22. There are no known negative impacts on people with protected characteristics, there is an assumption that some people with protected characteristics will be eligible for council tax relief.

<p>Further actions required</p>	<p>Residents will pay more Council Tax - however there is support via the Council Tax Reduction Scheme for those who qualify for such support. If someone is eligible for Council Tax support, the support applies immediately and so there would be no delay in accessing the support. For those who do not qualify for Council Tax Reduction Scheme support, the Council works closely and proactively with Citizens Advice to provide help and support with personal budgeting to those residents who may require it. Flexible payment options are available over ten or twelve months.</p>
--	--

Positive impacts identified:

<p>Improving the well-being of people with protected characteristics. The nine protected characteristics are: age; disability; gender reassignment; marriage or civil partnership; pregnancy and maternity; race; religion or belief; sex; and sexual orientation</p>	<p>The proposals allow for additional funding to be allocated to social care budgets. There are no known negative impacts on people with protected characteristics, there is an assumption that some people with protected characteristics will be eligible for council tax relief.</p>
<p>People who suffer discrimination or disadvantage</p>	
<p>Areas with poor economic, health or educational outcomes</p>	
<p>People in poverty</p>	

Negative impacts identified:

<p>Improving the well-being of people with protected characteristics. The nine protected characteristics are: age; disability; gender reassignment; marriage or civil partnership; pregnancy and maternity; race; religion or belief; sex; and sexual orientation</p>	
--	--

People who suffer discrimination or disadvantage	
Areas with poor economic, health or educational outcomes	
People in poverty	Residents will pay more Council Tax. Those who qualify will be supported by the Council Tax reduction scheme. There will be some residents who do not qualify and for whom the tax rise will be an additional burden.

A Denbighshire of cohesive communities

Overall Impact	Positive
Justification for impact	The proposal to raise Council Tax supports a budget that protects front line services and protects the investment in new priority areas to enhance community resilience.
Further actions required	Residents will pay more Council Tax - however there is support via the Council Tax Reduction Scheme for those who qualify for such support. For those who do not qualify for Council Tax Reduction Scheme support, the Council works closely and proactively with Citizens Advice to provide help and support with personal budgeting to those residents who may require it. Flexible payment options are available over ten or twelve months.

Positive impacts identified:

Safe communities and individuals	
Community participation and resilience	The proposal avoids significant cuts to service levels during 2021/22 and builds in priority investment in connecting communities and resilience as part of the priority funding for 2021/22.
The attractiveness of the area	
Connected communities	
Rural resilience	

Negative impacts identified:

Safe communities and individuals	
Community participation and resilience	
The attractiveness of the area	
Connected communities	
Rural resilience	

A Denbighshire of vibrant culture and thriving Welsh language

Overall Impact	Neutral
Justification for impact	The proposal to raise Council Tax supports a budget that helps to maintain services received by the public.
Further actions required	The negatives are managed through Council Tax relief being available for those who qualify for the support, though clearly this does not address the impact on all residents.

Positive impacts identified:

People using Welsh	The Council tax collection service and all correspondence is available through the medium of Welsh.
Promoting the Welsh language	
Culture and heritage	

Negative impacts identified:

People using Welsh	
Promoting the Welsh language	
Culture and heritage	

A globally responsible Denbighshire

Overall Impact	Neutral
Justification for impact	The proposal to raise Council Tax supports a budget that allows service levels to be broadly maintained in 2021/22 and so should not therefore adversely impact supply chains.
Further actions required	Residents will pay more Council Tax - however there is support via the Council Tax Reduction Scheme for those who qualify for such support. For those who do not qualify for Council Tax Reduction Scheme support, the Council works closely and proactively with Citizens Advice to provide help and support with personal budgeting to those residents who may require it. Flexible payment options are available over ten or twelve months.

Positive impacts identified:

Local, national, international supply chains	The proposal allows for service levels to be broadly maintained during 2021/22.
Human rights	
Broader service provision in the local area or the region	It also allows funding of a number of corporate priorities including Carbon Neutral targets, Schools, Social Care, Waste services and coping with Ash die-back.

Negative impacts identified:

Local, national, international supply chains	
Human rights	
Broader service provision in the local area or the region	